

(3) Short Note - 03 - Volvox

Sub - division - algae

Class - Chlorophyceae

Order - Volvocales

Family - Volvocaceae

Genus - Volvox

~~moments~~



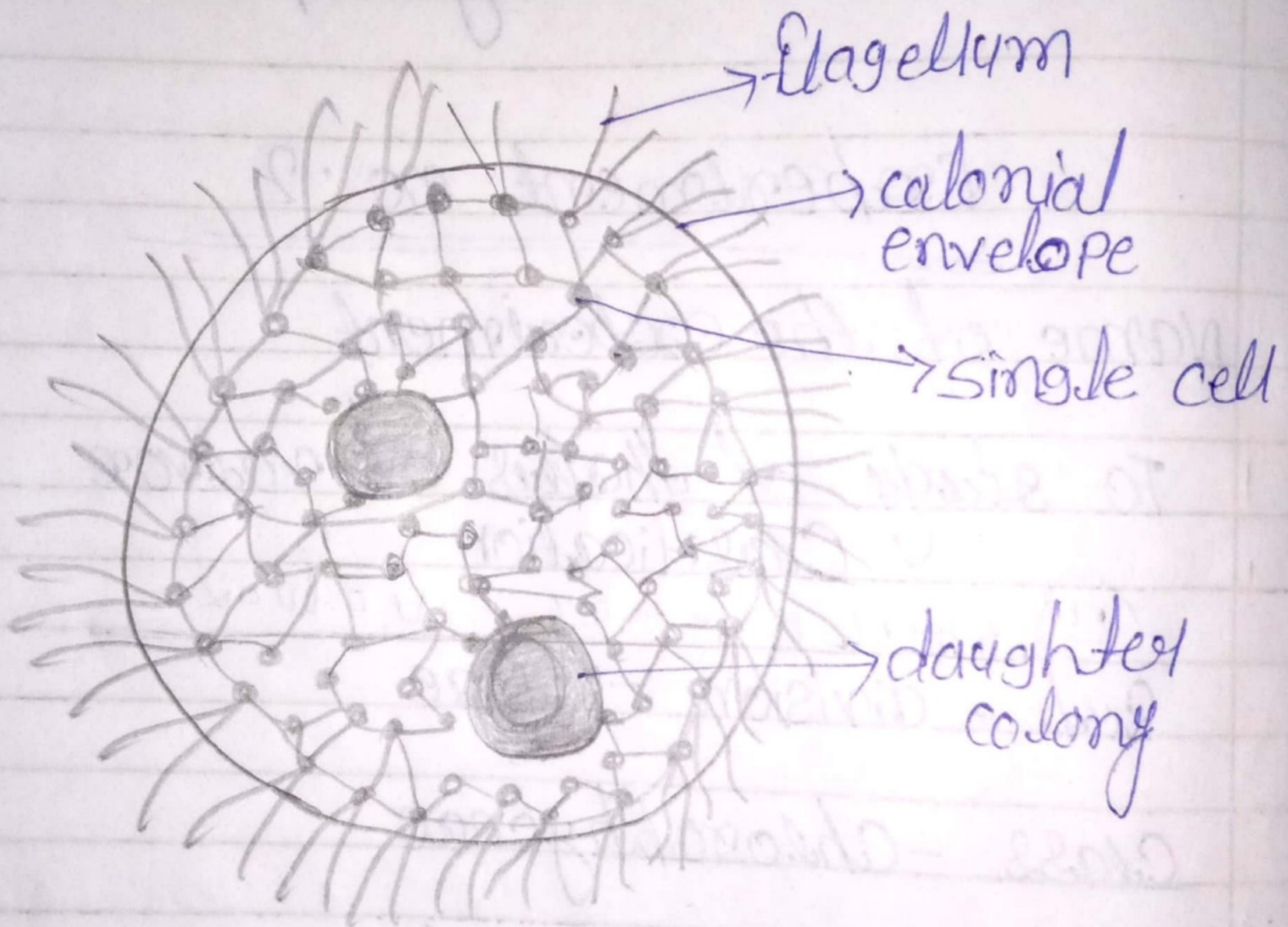


Fig. volvox : parent colony with daughter colonies.



- 11) Thallus is multicellular motile and a colonial colony
- 12) Colonies are mostly spherical rounded or oval in shape
- 3 It is hollow in the centre cells are arranged in a single layer towards the periphery
- 4 layer of cells is surrounded by a gelatinous mass which forms the outer and limiting layer
- 5 Each cell is enveloped by an individual gelatinous sheet
- 6 All the cells of a colony are typical Chlamydomonas in shape size and structure

