

Short notes - (i) oedogonium structure

1. Thalleus is multicellular filamentous and non-branched
2. A filament is differentiated into three types of cells according to their position  
(i) Basal (ii) Intercalary (iii) apical
3. The basal cell of a filament functions as a hold fast
4. A cell at the tip of the filament is called as apical cell
5. The cells present between basal and apical are called intercalaries
6. The typical cell is cylindrical
7. Cell wall consists three layers

Teacher's Signature : .....

8 Reticulate chloroplast

9 cell is uniculate

10 in upper region region each cell are appeared

### Experiment no 13

Name of the experiment  
Study of external features of  
Gametophyte of Riccia

Classification

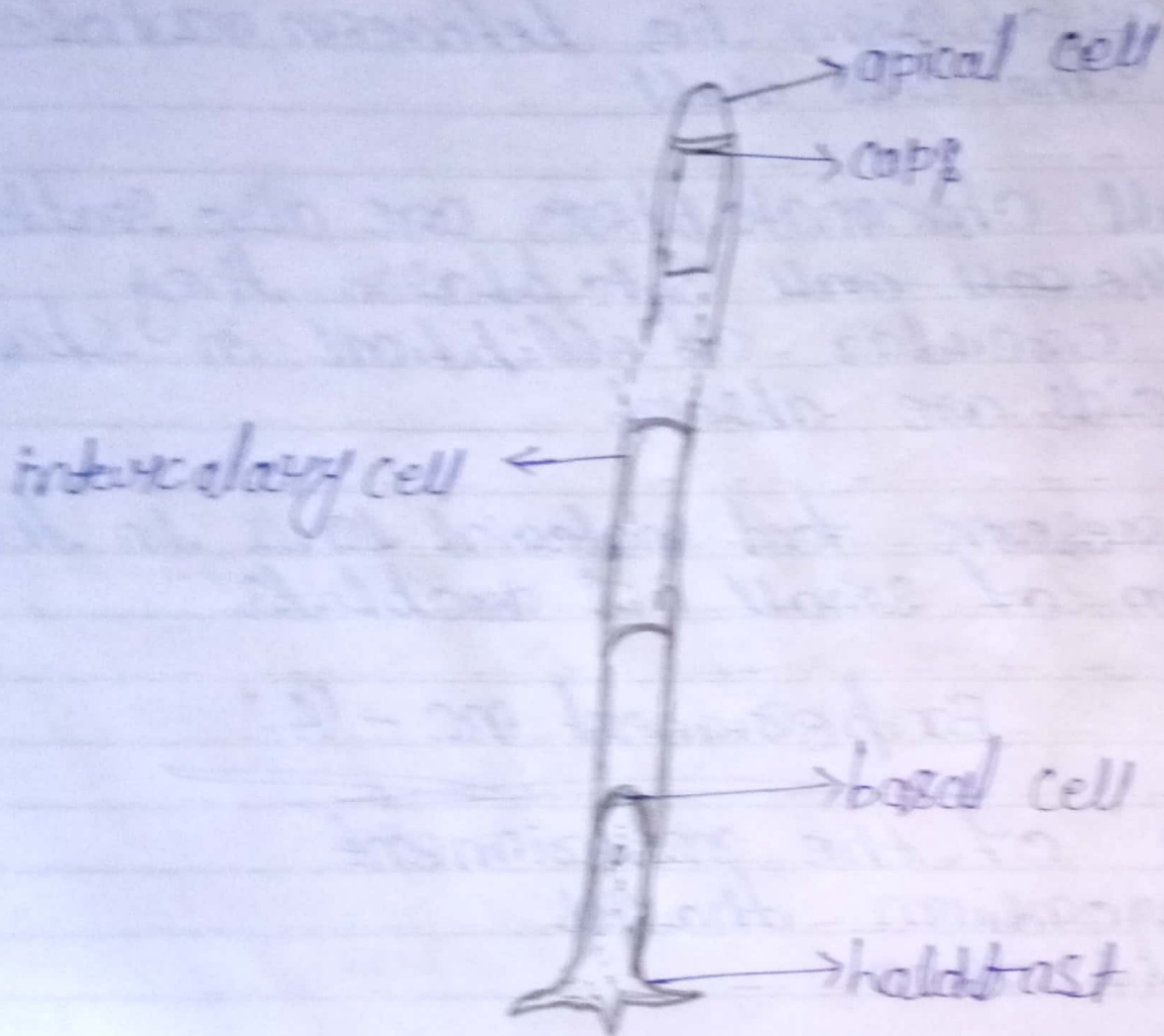
Sub-division - Bryophyta

Class - Hepaticopsida

Order - Marchantiales

Family - Riccia





fil. oedogonium: A filament

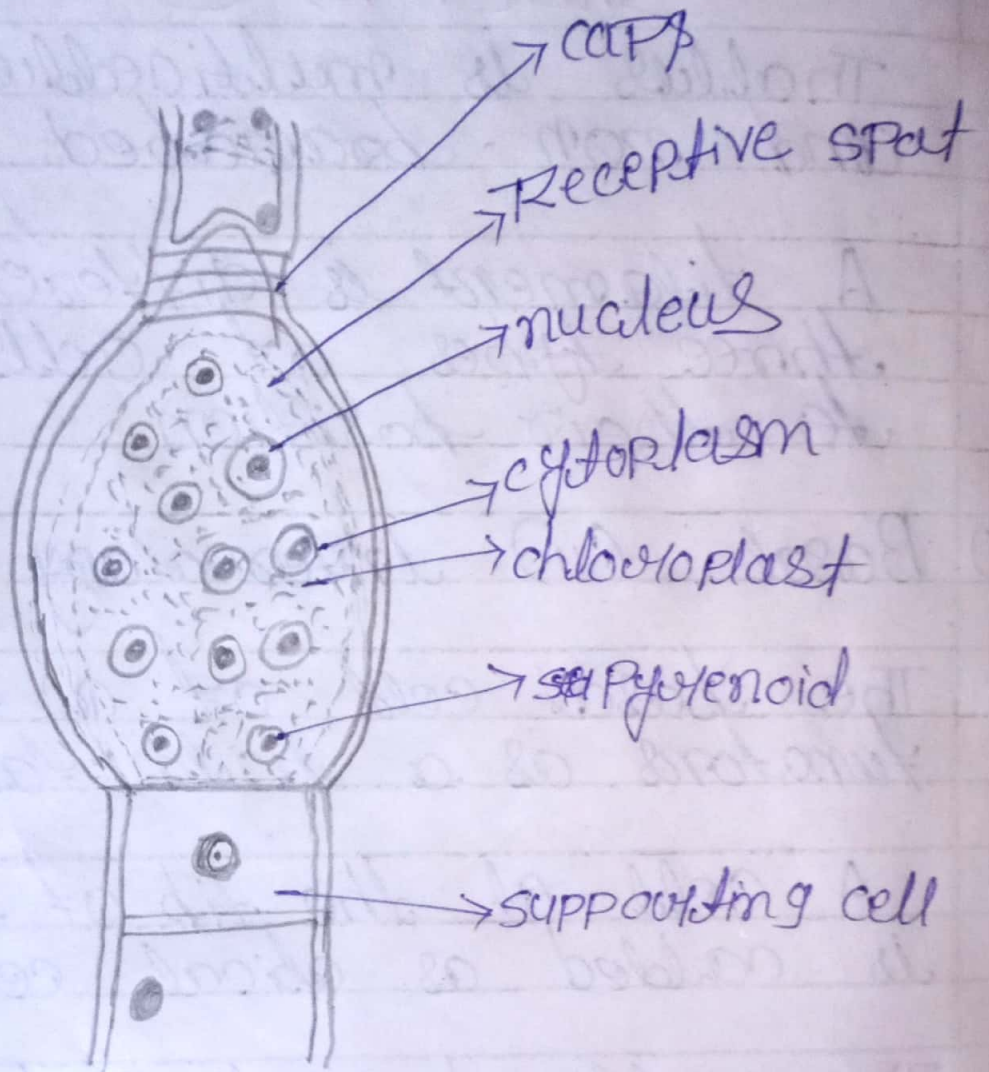


Fig - oedogonium: filament showing immature oogonium