

(2) Short Note (Vaucheria)

- 1 Thallus is unicellular multilocular multinucleate filamentous and branched (coenocytic)
- 2 Filaments are profusely branched the branching is lateral but appears dichotomous
- 3 It is terrestrial in habitat a few colourless rhizoidal branches are given out which penetrate soil
- 4 Cell wall is two layered outer layer is composed of pectate while

Teacher's Signature :

inner is that of cellulose

- (5) The cytoplasm lies between vacuole and the cell wall
- (6) Small chromatophores are also scattered in the cell wall cytoplasm they are circular or elliptical in shape pyrenoids are absent
- (7) The reserve food material is in the form of small oil droplets

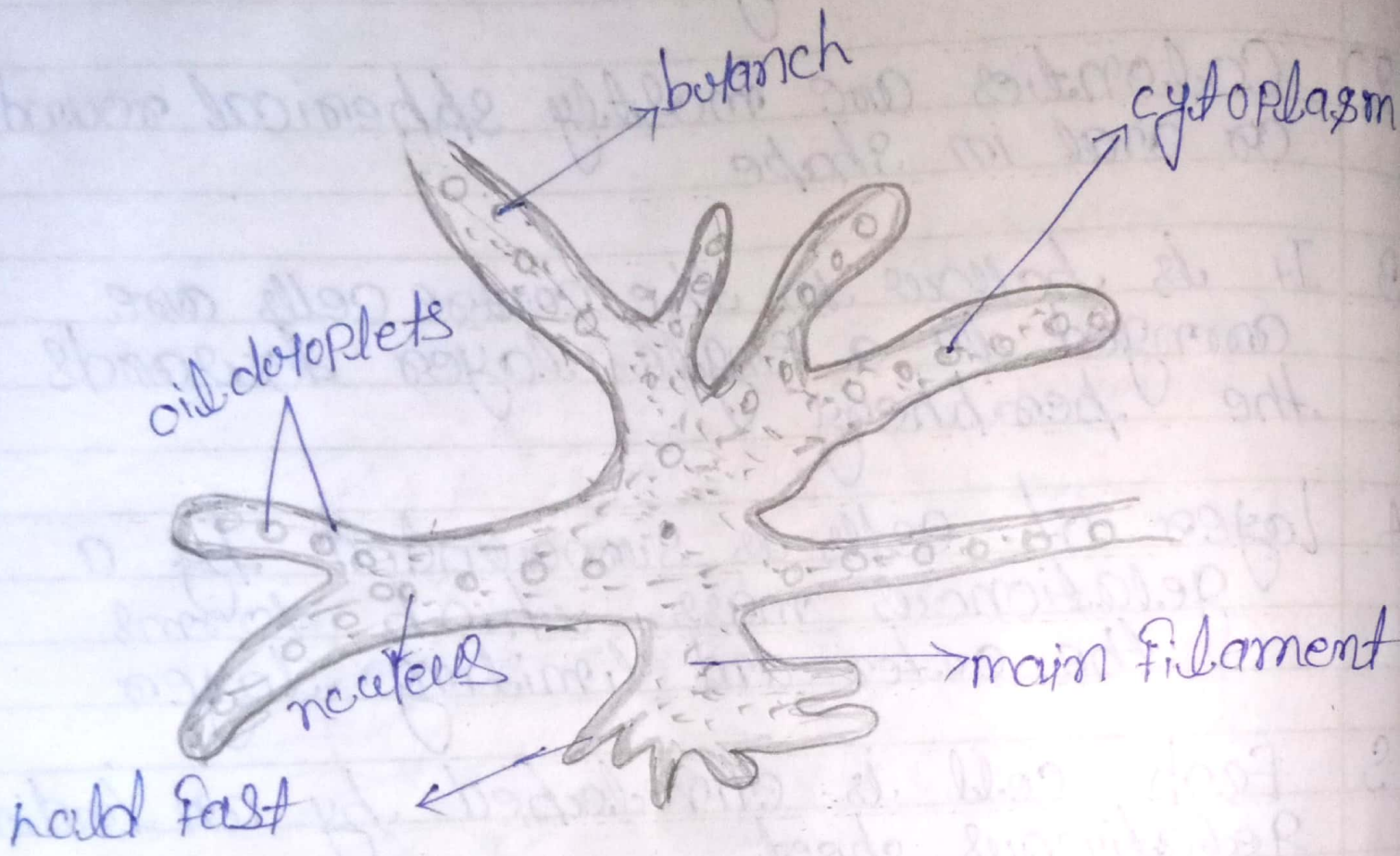


Fig - vauchercyia Thallus to show habit