

(3) Short Note - 03 - Volvox

Sub - division - algae

Class - Chlorophyceae

Order - Volvocales

Family - Volvocaceae

Genus - Volvox

~~Characteristics~~

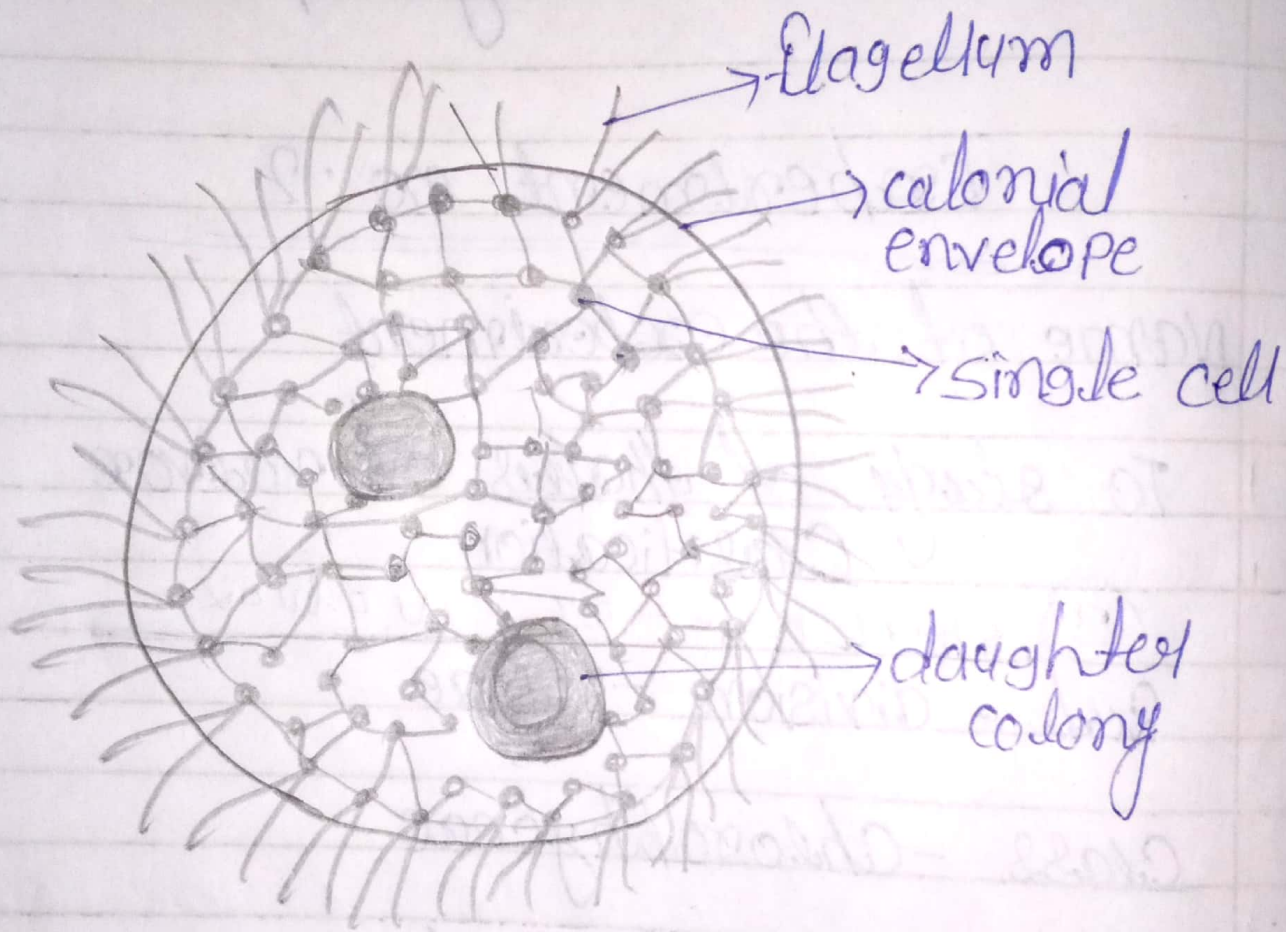


Fig. volvox : parent colony with daughter colonies.

- 11) Thallus is multiseptate and a coenocytic colony
- 12) Colonies are mostly spherical rounded or oval in shape
- 3 It is hollow in the centre cells are arranged in a single layer towards the periphery
- 4 Layer of cells is surrounded by a gelatinous mass which forms the outer and limiting layer
- 5 Each cell is enveloped by an individual gelatinous sheet
- 6 All the cells of a colony are typical Chlamydomonas in shape size and structure

